

CLERHP ESTRUCTURA S.A. IS LEADING THE PROJECT IN ARCHITECTURE, ENGINEERING, DESIGN AND CONSTRUCTION. CLERHP IS A PUBLICLY TRADED SPANISH COMPANY, LISTED ON THE SPANISH STOCK EXCHANGE MARKET ON THE BME GROWTH PLATFORM

GOVERNMENT & PERMITS

MASTER PLAN	A dynamic long-term planning document that provides a conceptual layout and guidance to the development of the project.	FINALIZED BUT PROGRESSING
CONCEPTUAL DESIGN	The design team establish and analyze a set of conditions that establish the framework and the requirements of the development. (zoning,site, budgeting and others)	FINALIZED & CONSISTENT PROGRESS
DESIGN DEVELOPMENT	The team select materials including interior finishes and products such as windows, doors, fixtures, and others. The architect will revise the drawings with more specific details than in the Schematic Designs. Engineering will begin to work on the structure, plumbing, electrical, heating and ventilation systems.	DETERMINED AND IN PROGRESS
CONSTRUCTION	The architect and engineers finalize all the technical design and engineering including structural engineering and detailing, all calculations and all products and materials are selected and scheduled.	DETERMINED AND IN PROGRESS



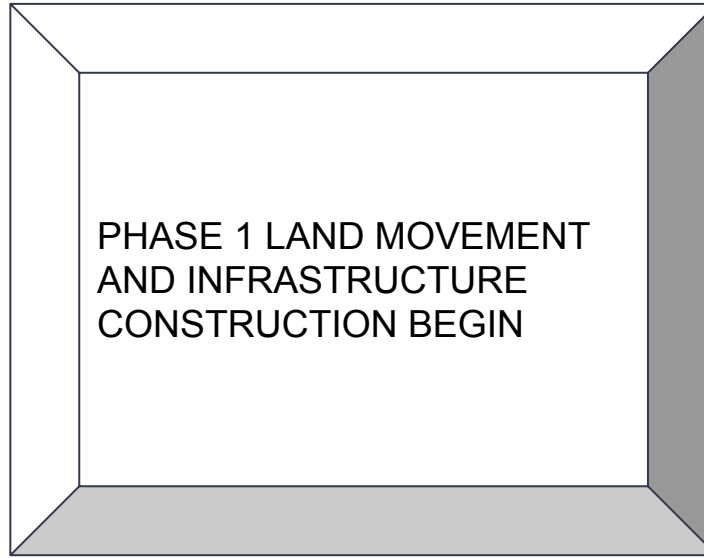
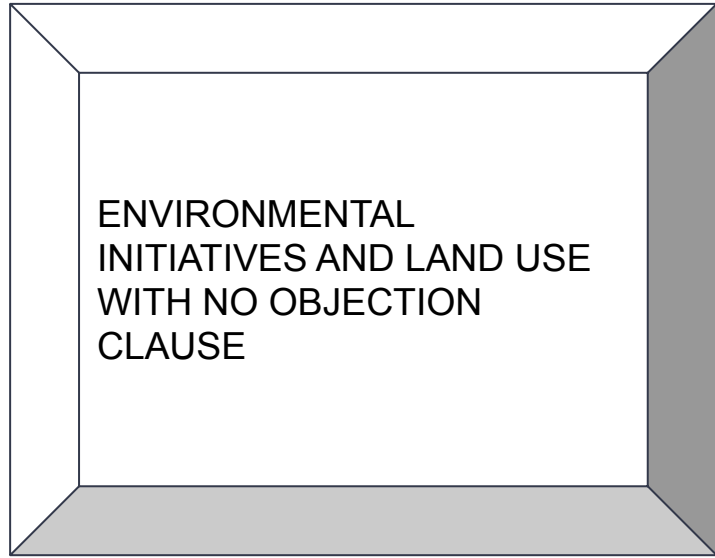
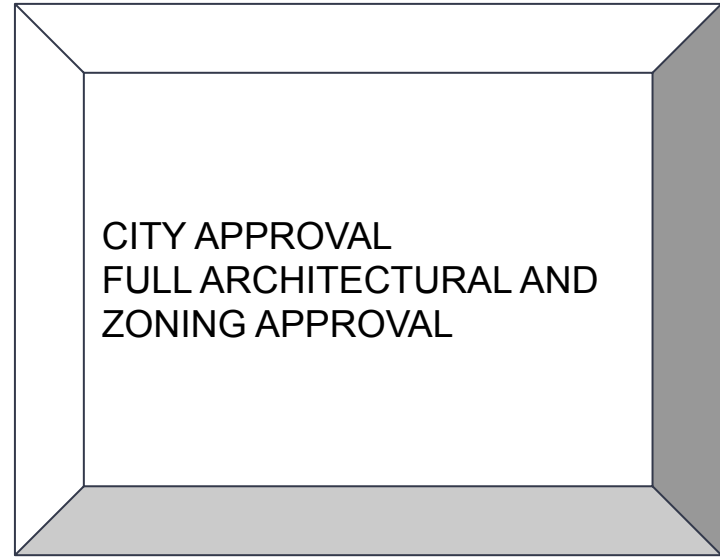
CONSTRUCTION CHRONOGRAM

☐ See Attached

☐ See Attached

September 2022

☐



ENVIRONMENTAL, SOCIAL INITIATIVES AND LAND USE



ENVIRONMENTAL AND
SOCIAL INITIATIVES

SOCIAL INITIATIVES	
LOCAL JOBS GENERATIONS/TRAINING	Construction and operation will require the involvement of a significant amount of direct local labor, the developer is considering thousands of jobs. Training will be provided to fulfill the requirements for this type of projects
CELEBRATION OF LOCAL CULTURE	The use of local artisans and craftsmen for the interior design and other fixtures will be a way to incorporate and support locals artist and support the Dominican Culture
ENVIRONMENTAL INITIATIVES	
NATURAL ENVIRONMENT	This projects are part of the ecosystem of the planet. To respect and celebrate this environment is a main objective of the projects
SUSTAINABILITY INITIATIVES	A full set of guidelines will be implemented to be used as a base for the design, the construction and operation of the projects.
LAND USE	We have no objection already for the land use, our groundbreaking on Punta Cana will begin on the month of September, 2022.